

SE 1/4
SECTION 18, T.6N., R.2W., S.L.B. & M.

IN WEBER COUNTY

SCALE 1" = 200'

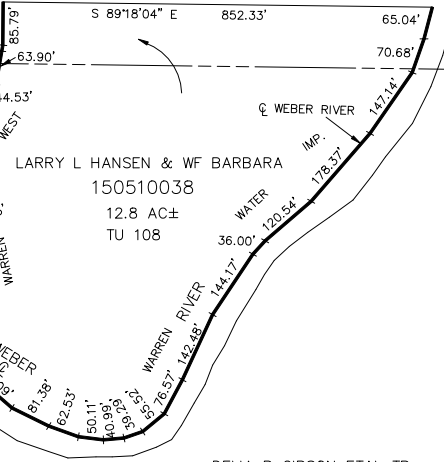
TAXING UNIT: 57, 108

SEE PAGE 51-1

SEE 150510014

WEBER RIVER

GIBSON FAMILY LLC=10% ETAL
150510013
13.68 AC±
TU 57



LARRY L HANSEN & WF BARBARA
150510038
12.8 AC±
TU 108

DELIA B GIBSON ETAL TR
150510003
30.36 AC±
TU 57

SEE PAGE 51-3

GIBSON FAMILY LLC=50% ETAL
150510012
27.31 AC±
TU 57

GGA LLC
150510011
42.35 AC±
TU 57

GGA LC
150510004
28.41 AC±
TU 57

LARKIN LAND CO LLC
(150510037)
3.16 AC±
TU 108

16.46 CHS
14.75 CHS
GGA LLC

GEORGE DEE MCFARLAND
ENTERPRISES
150510007
6.20 AC±
TU 57

MILTON C CHRISTENSEN
& WF IONA B
150510006
6.31 AC±
TU 57

150510009
5.82 AC±
TU 57

LARKIN LAND CO LLC
(150510010)
1.26 AC± TU 57

SEE PAGE 52

SEE PAGE 50